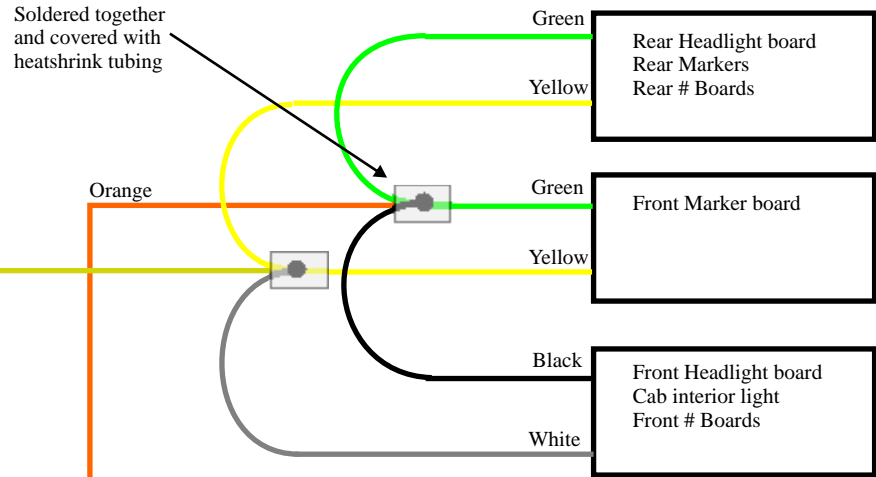


GP38-2 Old Style Chassis Wiring that uses 2-conductor plugs having 0.1 inch centers

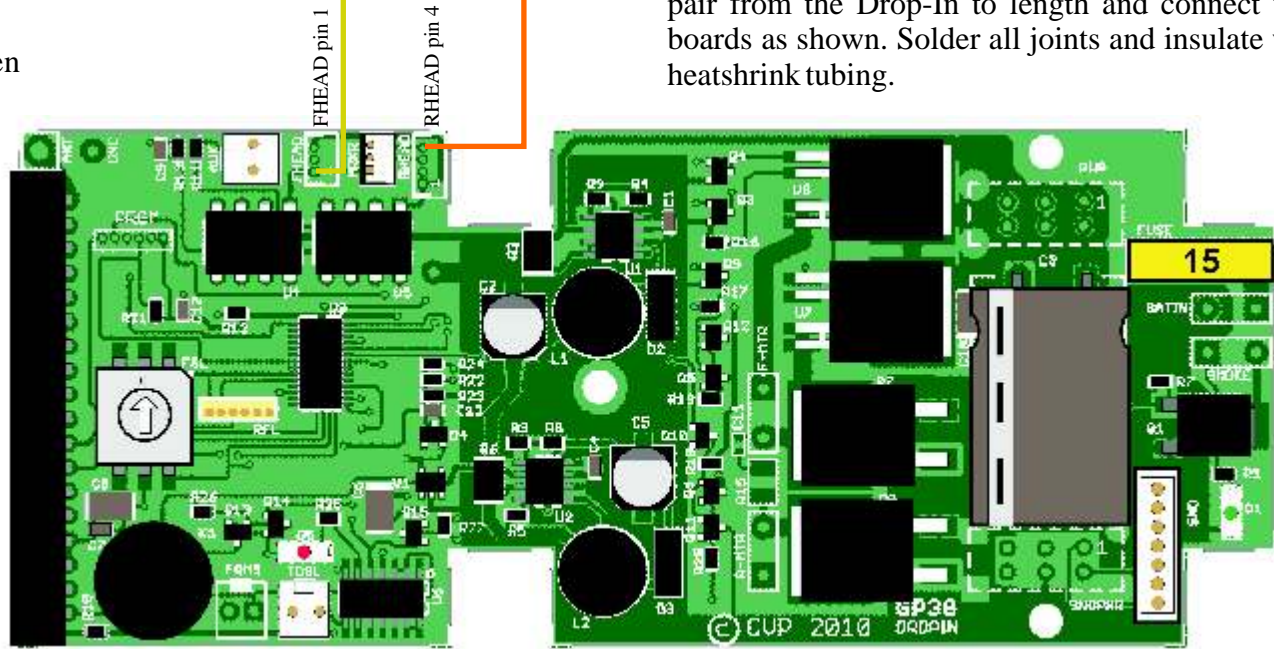
Before final assembly, verify that markers and headlights are working properly for the direction indicated on the throttle.

Use F0 to enable lights. Throttle direction determines which lights are on and color of the marker lights. If any of the board's lights are reversed from what is shown, reverse the connections of the board's two wires where they connect to the Drop-In wires.

	<u>Forward</u>	<u>Reverse</u>
Front Headlights	On	Off
Cab interior	On	On
Front number boards	On	On
Front marker lights	Green	Red
Rear Headlights	Off	On
Rear number boards	On	On
Rear marker lights	Red	Green



Cut off white plugs from wires. Connect the wires together as shown. After Drop-In is mounted, trim the Orange/Yellow pair from the Drop-In to length and connect to the lamp boards as shown. Solder all joints and insulate with tape or heatshrink tubing.



Modified GP38 Drop-In

Non-Standard GP38 chassis lighting hookup

r2 GP38 - modified for nonstandard loco
12-30-10
©2010 CVP

CVP PRODUCTS
P.O. Box 835772
Richardson, TX 75083
May not be reproduced or copied