

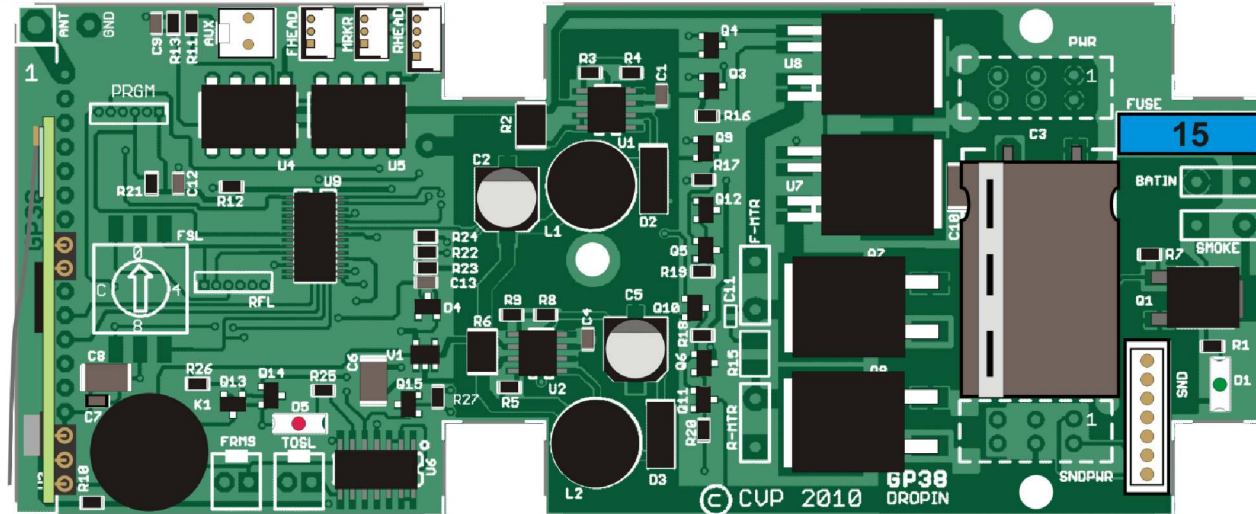
## Checkout of New Lighting Cable and Hookup

Before final assembly, verify that markers and headlights are working properly for the direction indicated on the throttle.

**Use F0 to enable the lights.** Note that because of the first generation loco wiring, individual control of markers, cab and headlight is not possible. Throttle direction determines which lights are on and color of the marker lights. If any of the board's lights are reversed from what is shown, reverse the connections of the board's two wires where they connect to the Drop-In wires.

	<u>Forward</u>	<u>Reverse</u>
Front Headlights	On	Off
Cab interior	On	On
Front number boards	On	On
Front marker lights	Green	Red
Rear Headlights	Off	On
Rear number boards	On	On
Rear marker lights	Red	Green

GP38 Drop-In

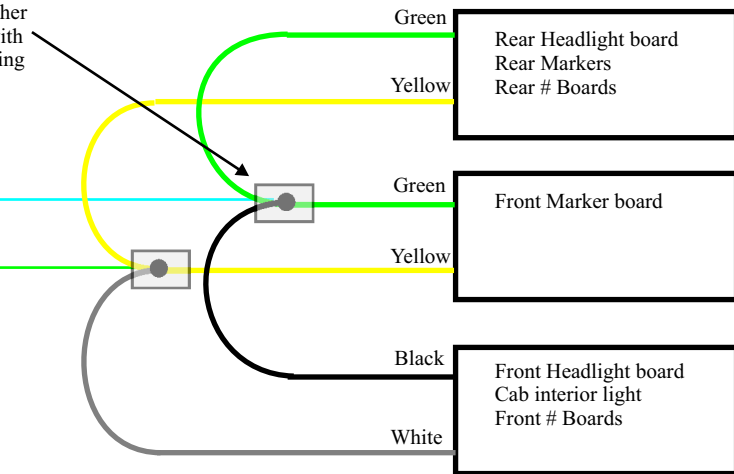


3 Conductor Miniature Plug

4 Conductor Miniature Plug

Wire Colors May Vary  
Pin numbers are for the plug  
Plugs are polarized and will only plug  
in one way.

Soldered together  
and covered with  
heatshrink tubing



Cut off large white plugs from wires coming from locomotive circuit boards. Connect the lamp board wires together as shown. Install the Drop-In decoder. Plug in the 2 new small plugs into the Drop-In decoder as shown. The plugs are polarized and install in one direction only.

Trim the new cable pigtails to desired length and connect to the lamp boards as shown. Solder all joints and insulate with tape or heatshrink tubing.

## First Generation GP38 Light Hookup Kit

Designed for use with first generation USA-Trains GP38-2 locomotives. The locomotive did not have a voltage regulator and used 18V incandescent lamps. This kit provides two matching plugs to the Drop-In sockets. The wires are then hooked up to the locomotive internal light boards as shown.

First Gen Light Kit  
USAT GP38-2

4-11-16

©2010-2018 CVP

**CVP PRODUCTS**  
P.O. Box 835772  
Richardson, TX 75083

May not be reproduced or copied